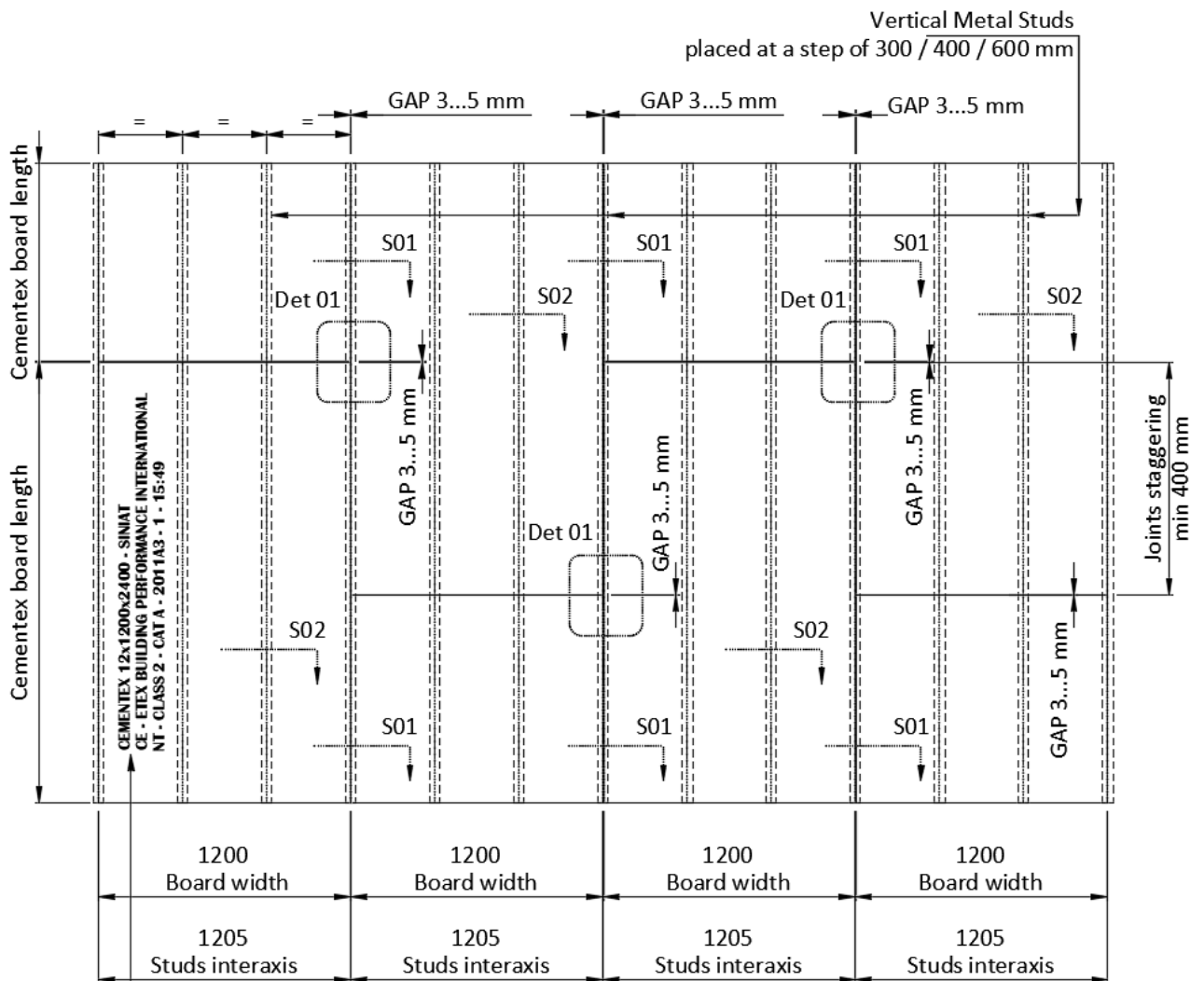


# Cementex

The technology for fiber cement boards installation on metal structure

## Siniat Cementex Boards Elevation



The Cementex boards will always be installed with the printing on the exterior.

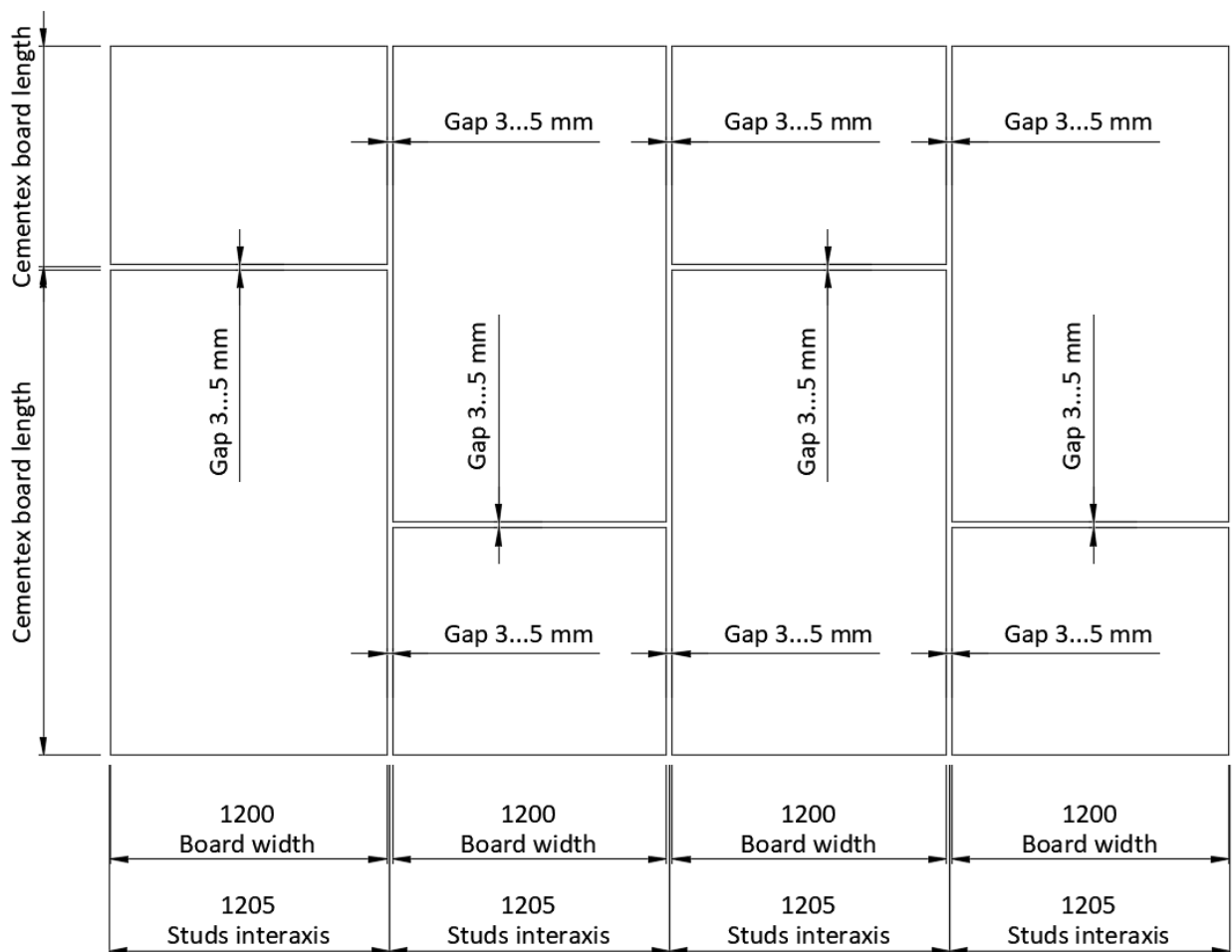
Important note:

The application of the covering systems on the Cementex boards will be done at a minimum of 24 h after the installation of the boards on the structure, to allow the boards to "acclimatize".

# Cementex

The technology for fiber cement boards installation on metal structure

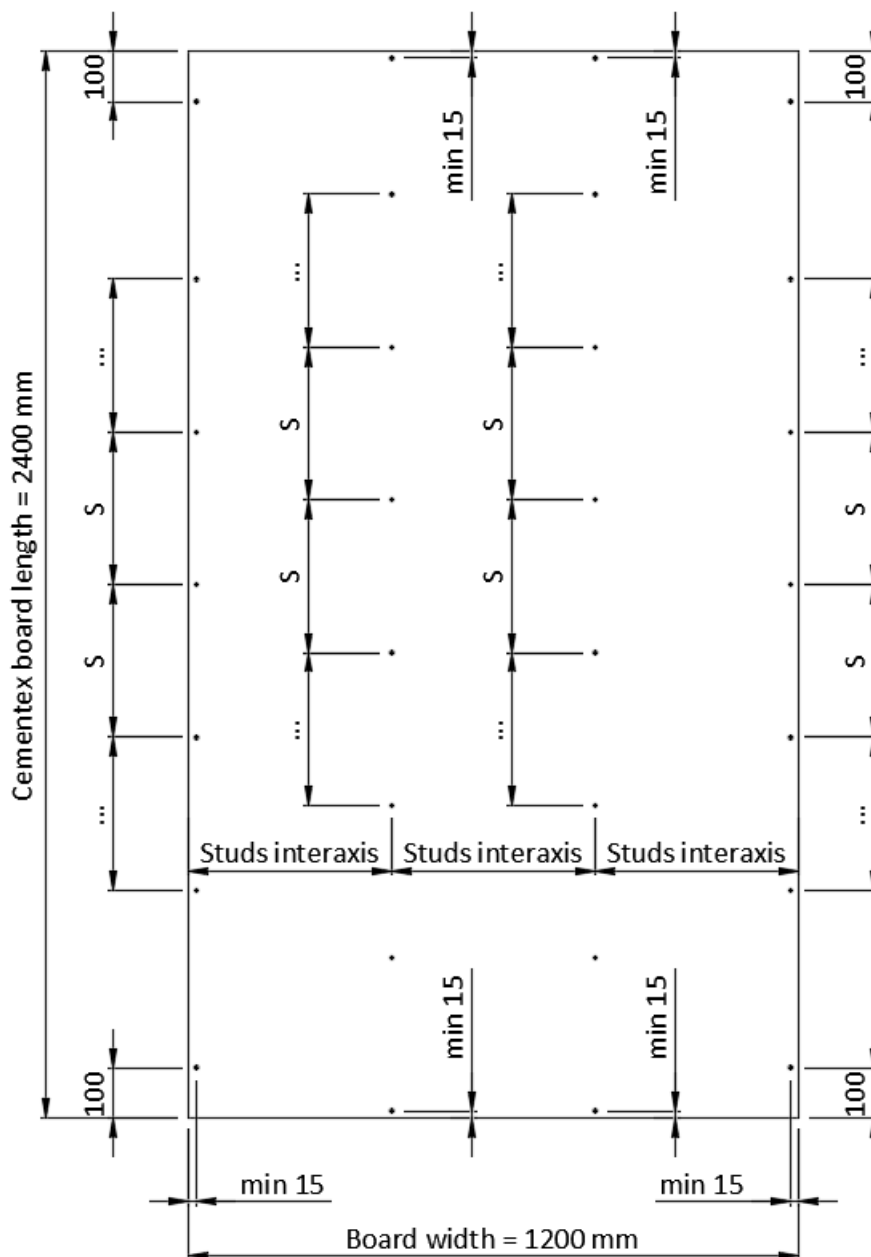
## Siniat Cementex Boards Elevation



# Cementex

The technology for fiber cement boards installation on metal structure

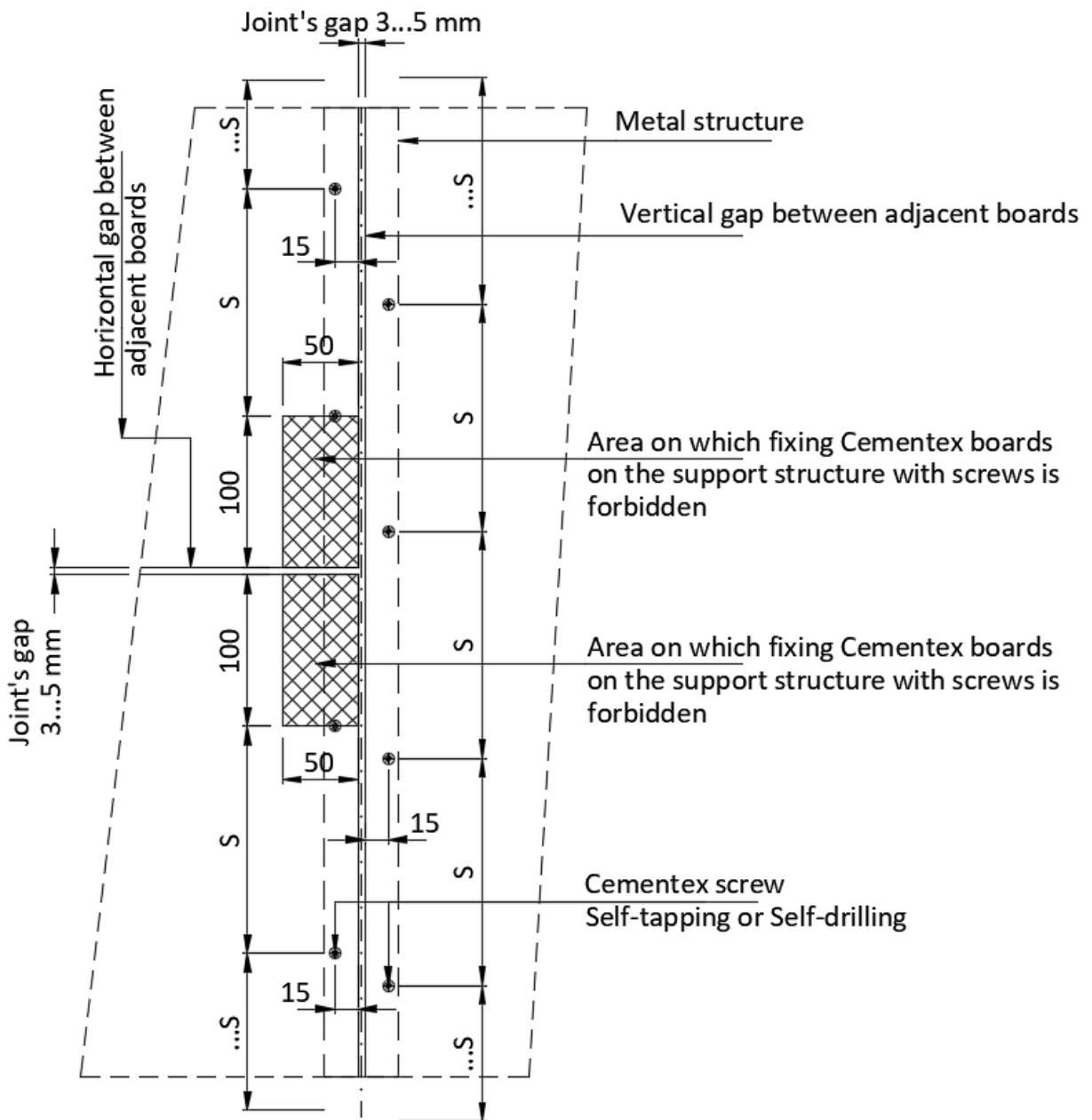
Detail of boards fixing on the metal structure – Screws disposal



# Cementex

The technology for fiber cement boards installation on metal structure

Detail no. 1. Local elevation

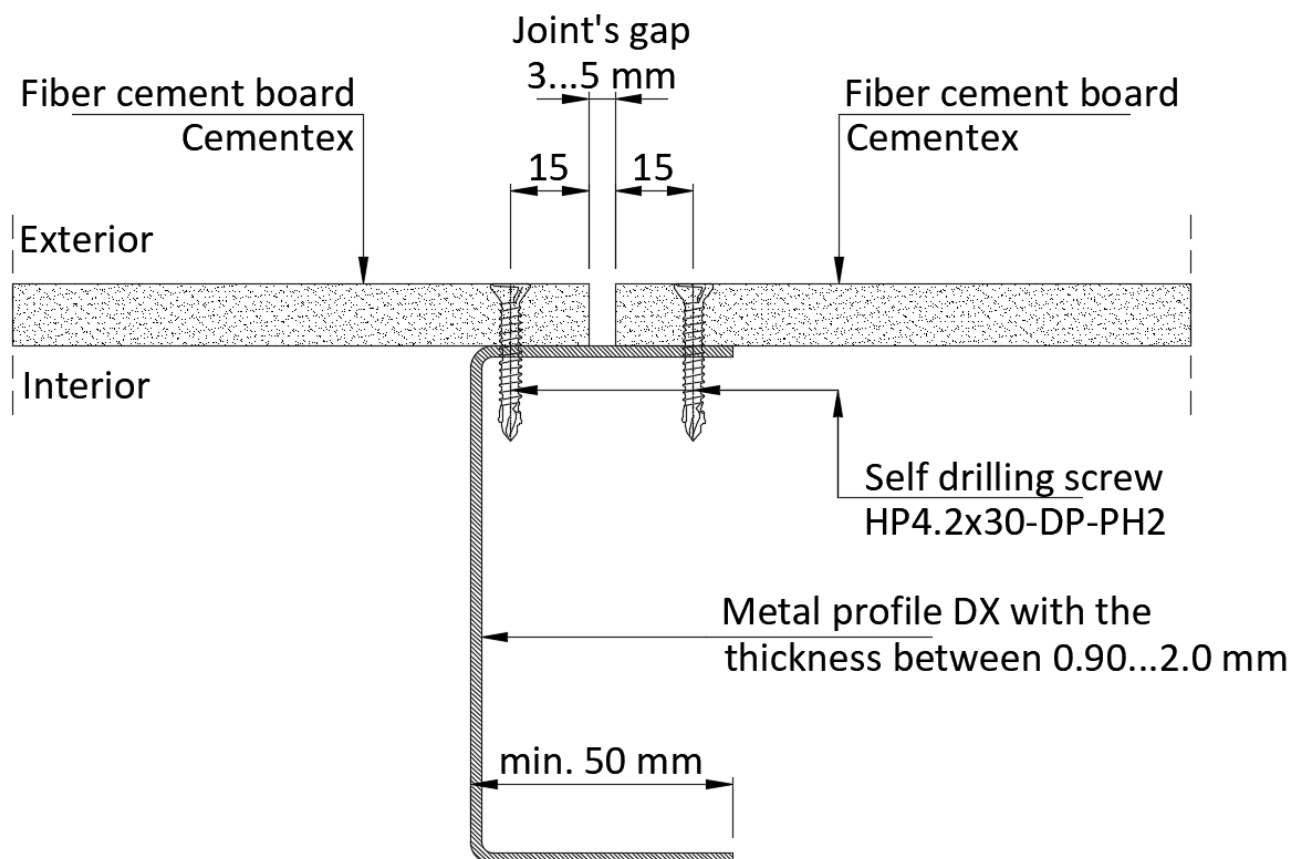


S - Disposal step for the screws used for fixing the Cementex boards on the support structure  
In the absence of other technical specifications for the project, S = maximum 300 mm

## Cementex

The technology for fiber cement boards installation on metal structure with the thickness between 0.90 mm and 2.0 mm.

### Horizontal section S01



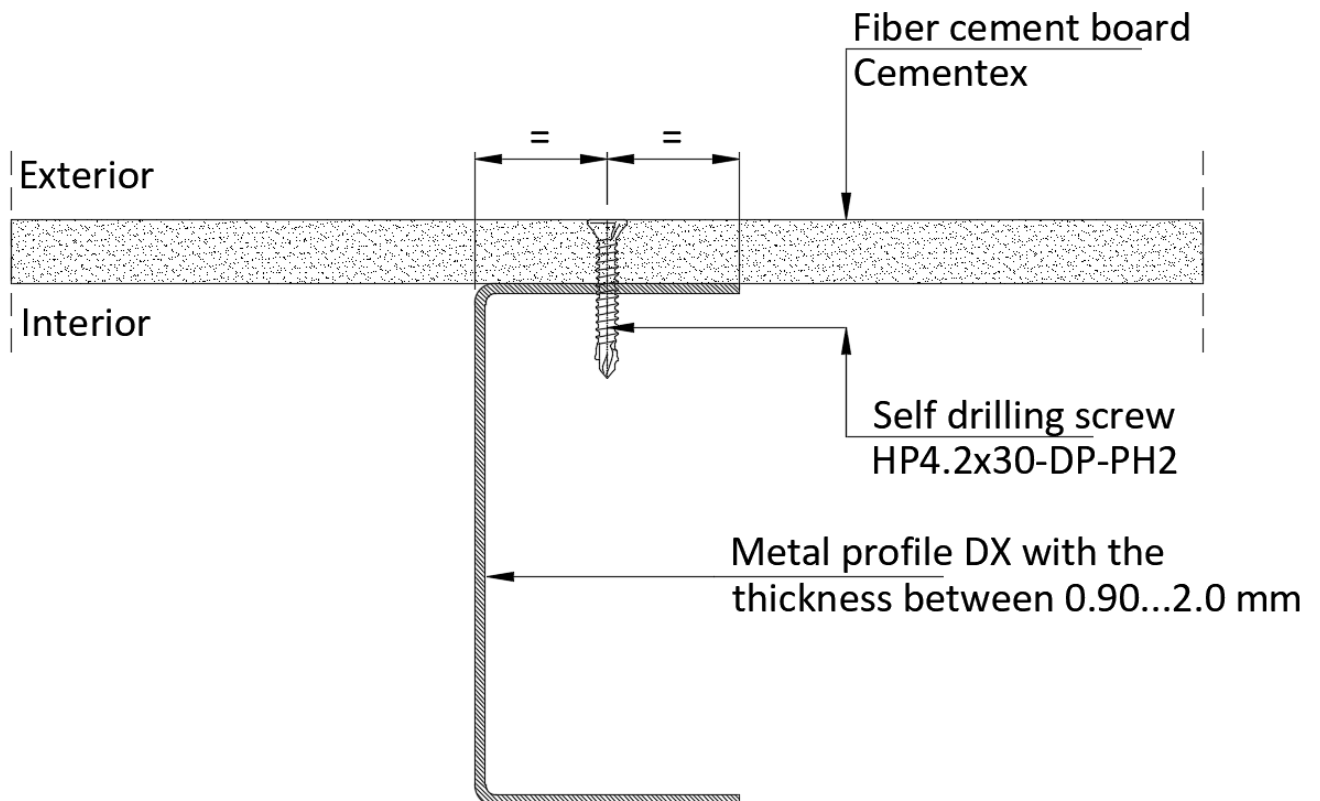
### Important note:

The application of the covering systems on the Cementex boards will be done at a minimum of 24 h after the installation of the boards on the structure, to allow the boards to "acclimatize".

## Cementex

The technology for fiber cement boards installation on metal structure with the thickness between 0.90 mm and 2.0 mm.

Horizontal section S02



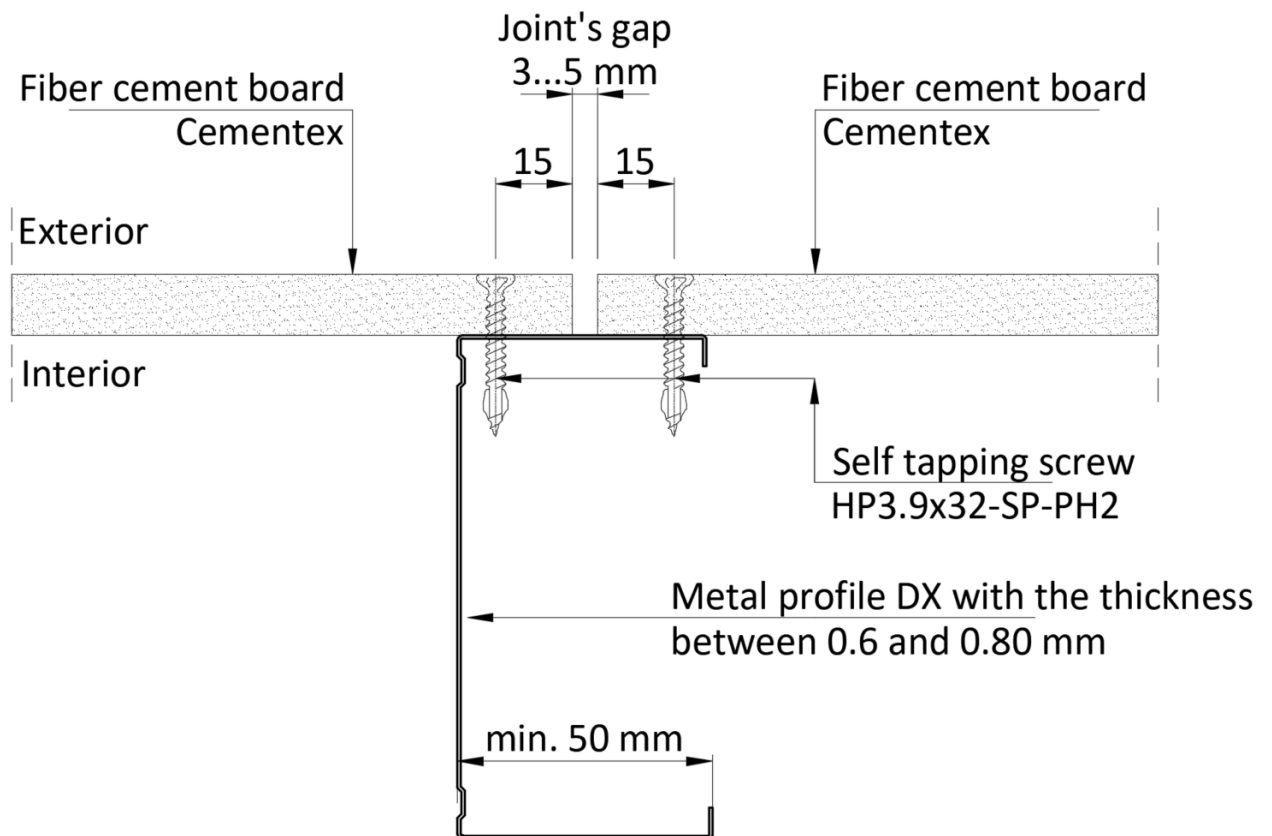
Important note:

The application of the covering systems on the Cementex boards will be done at a minimum of 24 h after the installation of the boards on the structure, to allow the boards to "acclimatize".

## Cementex

The technology for fiber cement boards installation on metal structure with the thickness between 0.60 mm and 0.80 mm.

### Horizontal section S01



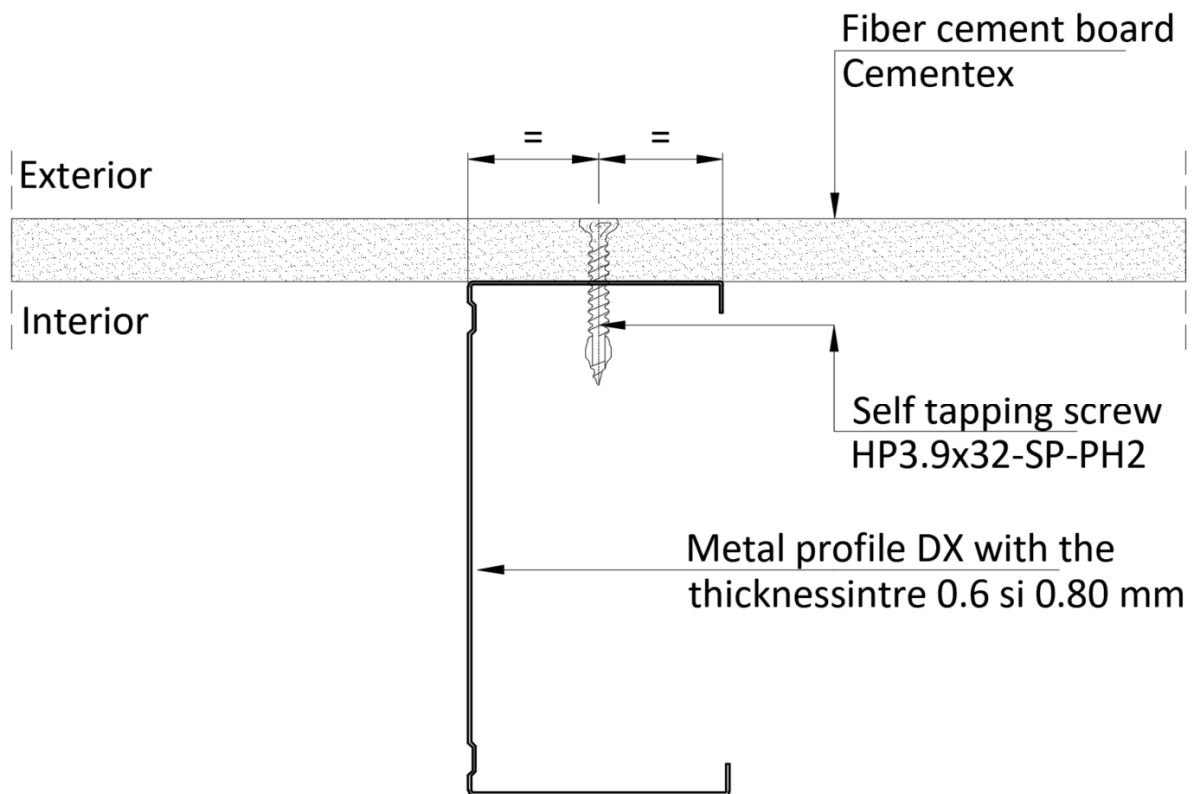
#### Important note:

The application of the covering systems on the Cementex boards will be done at a minimum of 24 h after the installation of the boards on the structure, to allow the boards to "acclimatize".

## Cementex

The technology for fiber cement boards installation on metal structure with the thickness between 0.60 mm and 0.80 mm.

Horizontal section S02



Important note:

The application of the covering systems on the Cementex boards will be done at a minimum of 24 h after the installation of the boards on the structure, to allow the boards to "acclimatize".



## Cementex

The technology for fiber cement boards installation on metal structure

Presentation of screws used for fixing Cementex boards on metal structure with a thickness of maximum 80 mm.

- Self tapping screw HP 3.9 x 32-SP-PH2 (500 pieces / box)

**HP 3,9 x 32-SP-PH2**



Presentation of screws used for fixing Cementex boards on metal structure with the thickness between 0.90 and 2.0 mm.

- Self drilling screw HP 4.2 x 30-DP-PH2 (200 pieces / box)

**HP 4,2 x 30-DP-PH2**



The main characteristics of the Cementex screws are:

1. Material: Galvanized alloy steel
2. Additional zinc coating, tested at 500 hours in saline water. Corrosion resistance class C4, according to ISO 12944-2, being suitable for environments with medium and high humidity, for exterior and interior use.
3. BIT type for installation: PH2